



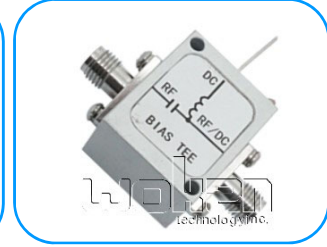
0230A02021201L

Bias Tee

0.2-12GHz RF+DC:SMA(F),
RF: SMA(F), DC: Solder 25V 400mA
Bias Tee

Features

- ✓ High Repeatability
- ✓ Low VSWR



Electrical Specifications

Frequency	0.2-12GHz
VSWR	1.5:1(Max.)
Insertion Loss	1.7dB(Max.)
Isolation:	25dB(Min.)
DC Voltage	25VDC(Max.)
DC Current	400mA(Max.)
RF Power	1W(Max.)
Impedance	50Ohm
Connection	RF Input Port:SMA Female RF Output Port:SMA Female DC Input Port:Solder Post

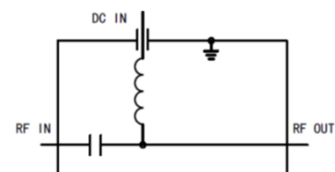
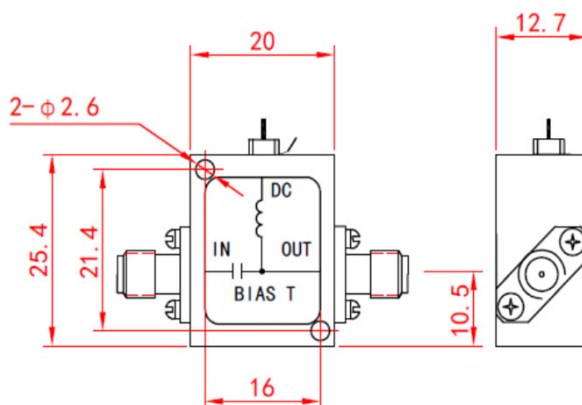
Mechanical

Durability	500 Cycles
------------	------------

Environmental

Operating Temperature	-40°C~80°C
-----------------------	------------

Outling Drawing (Unit:mm)



Test Report

